


Jabra GN

Jabra Biz 2300

Engineered to be the affordable contact center headset



Take your brand's voice to a higher level with the power of better conversations. Jabra Biz 2300 corded headset is an investment in world-class sound, high user satisfaction and competitive total cost of ownership.

Crystal clear sound

Your knowledge workers are your brand's front line. Jabra Biz 2300 will ensure every conversation becomes a great brand experience. Jabra Biz 2300 features HD Voice/Wideband speaker performance and best-in-class noise cancellation.

Superior comfort

The Jabra Biz 2300 blends light-weight yet durable construction with an unobtrusive, professional Scandinavian design aesthetic. The Jabra Biz 2300 works hard, looks great and is designed for easy daily handling. It is a headset built to be comfortable all day long.

Advanced build

Jabra Biz 2300 is built with total cost of ownership in mind. Beside 360° degree rotating break proof boom arm and reinforced cord, Jabra Biz 2300 is built to withstand the everyday life of a high-performing environment.

Easy to deploy and manage

Jabra Biz 2300 headsets are optimized for use with all leading desk phone systems and Unified Communications platforms. Jabra Xpress enables you to easily configure all of your company's audio devices from one central point.¹

¹ Go to Jabra.com/xpress ² Programmable buttons increase user efficiency by supporting applications including the Jabra Contact Center Agent App for Cisco Finesse and Push-To-Talk functionality.

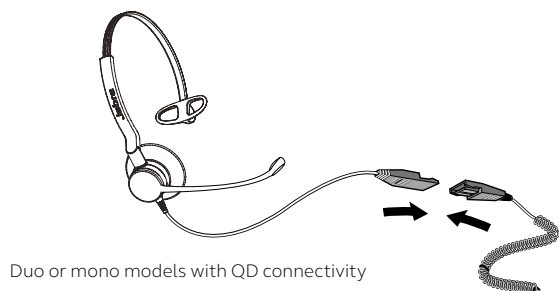
At a glance

Jabra Biz 2300 corded headsets

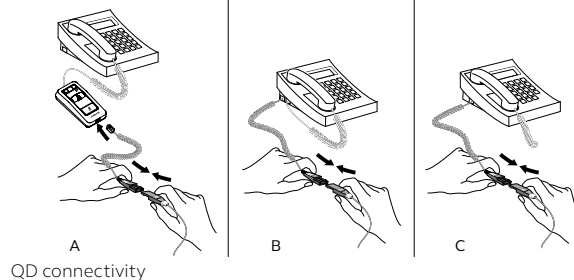
- Breath-resistant microphone with noise cancellation
- Durable reinforced cord and programmable buttons for USB variant²
- 20% lighter than competitors with padded ear cushions and 360° flexible spin boom arm
- All-day wearing comfort



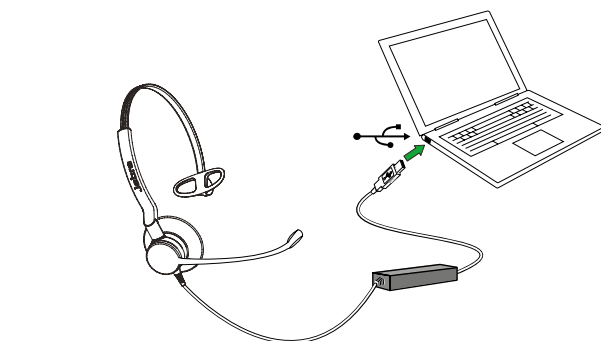
How to connect



Duo or mono models with QD connectivity



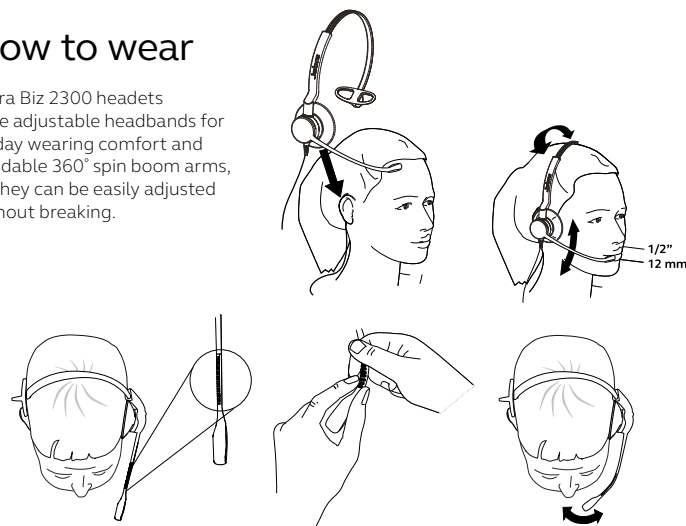
QD connectivity



Duo or mono models with USB connectivity simply plug into the USB port on your PC

How to wear

Jabra Biz 2300 headsets have adjustable headbands for all day wearing comfort and bendable 360° spin boom arms, so they can be easily adjusted without breaking.



Features	Jabra Biz 2300 QD Duo ¹	Jabra Biz 2300 QD Mono ¹	Jabra Biz 2300 USB-A/USB-C Duo	Jabra Biz 2300 USB-A/USB-C Mono
Connectivity – number of devices	1/desk phone	1/desk phone	1/softphone	1/softphone
User sound protection (PeakStop™, Noise@Work, Acoustic Shock, G616 compliant)	Yes	Yes	Yes	Yes
Digital Signal Processing	No	No	Yes	Yes
Breath-resistant microphone	Yes	Yes	Yes	Yes
Noise cancelling microphone	Yes	Yes	Yes	Yes
Microphone (G-MOS, Tx, CC)	4.3	4.3	4.3	4.3
Speaker (wideband/up to khz)	6.8	6.8	6.8	6.8
Hi-Fi sound (up to khz)	No	No	16	16
Adjustable boom arm	360°	360°	360°	360°
Flexible boom arm	Yes	Yes	Yes	Yes
USB-controller	No	No	Yes	Yes
Ear cushions	Foam and leatherette	Foam and leatherette	Foam and leatherette	Foam and leatherette
Wearing styles	Headband	Headband	Headband	Headband
Headset weight (g)	68	49	68	49
Cord length (cm)	107.5	107.5	235	235

Compatibility

For compatibility information go to [Jabra.com](https://www.jabra.com)



¹ Using the Jabra Biz 2300 QD Wideband, Mono or Duo headset together with Jabra Link 260 MS you get a headset solution that meets Skype for Business standard.