

Nureva® HDL300 audio conferencing system

Ideal for mid-size spaces



Trust the HDL300 system to deliver the best in audio performance for your mid-sized spaces. Seated, standing or walking around – no restrictions mean that your teams work the way that best suits them and their tasks. It installs on the wall in minutes for a clean, uncluttered aesthetic. And its plug-and-play connectivity and autocalibration mean that setup is simple.

Thousands of virtual microphones

At the heart of the HDL300 audio conferencing system is Nureva's revolutionary Microphone Mist™ technology. It surpasses traditional audio conferencing technologies, filling a space with thousands of virtual microphones to provide true full-room coverage. For the first time, meeting participants can be heard no matter where they move in the room or which direction they face.

One simple solution

The HDL300 system was designed for simplicity. You can install it yourself in less than 30 minutes. It also autocalibrates so no matter how often you reconfigure your spaces, no adjustments or added components are needed. Plug-and-play connectivity to leading UC&C platforms means there are no drivers to install. And the HDL300 hangs on the wall to keep the tabletop free of clutter for a more inviting and productive workspace.

Active Zone Control – a presentation audio breakthrough

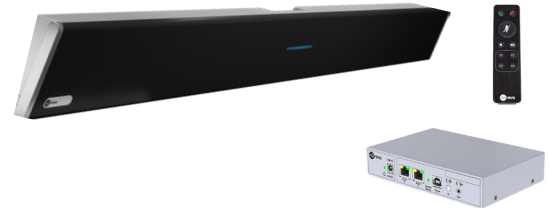
Active Zone Control lets you easily adjust the coverage zone in a room to give preference to the voice of a presenter or lecturer while reducing pickup of the sounds from the rest of the room. It makes the hassles of headsets and fixed and lapel microphones a thing of the past and is ideal for lesson capture and meetings in open-space offices.

Intelligent sound targeting – eliminating unwanted sounds

HVAC and other unwanted sounds can seriously affect conference call audio. Using adaptive learning algorithms, intelligent sound targeting identifies unwanted sounds and simply stops picking them up.

“We were so impressed with the sound quality, ease of install and ease of use of the HDL300 system, it was a no brainer for us to adopt it.”

– Jimmy Yan, principal collaboration engineer, HubSpot



Designed for mid-size spaces

Up to 25' by 25' (7.6 x 7.6 m)

8,192 virtual microphones

They fill the space providing full-room coverage

Advanced system processing

Running at 15,000 MIPS, the system simultaneously processes all 8,192 microphones

Continuous autocalibration

Adapts to room configurations dynamically

Plug and play

Recognized as a standard USB device. No drivers needed.

Advanced audio

Acoustic echo cancellation, position-based gain control

Wall-mount installation

A simple install. No tabletop clutter or noise.

Nureva Console

Manage products from anywhere. Automatic firmware updates. Additional year of warranty upon enrollment.

Budget friendly

The HDL300 costs far less than most installed systems

UC&C compatibility

Tested to work seamlessly with leading UC&C platforms, including Microsoft® Teams, Zoom, GoToMeeting®, Cisco Webex® and StarLeaf

GENERAL

Powerful system processors capable of executing 15,000 MIPS
 Continuous autocalibration
 Acoustic echo cancellation
 Built-in sound masking
 Position-based gain control
 Plug and play, no software or drivers required
 Integrated, multicolor status LED
 Compatible with leading UC&C platforms
 Single cable, power over Ethernet
 Primary audio source for video playback

MICROPHONES

Number	12
Type	Low-noise omnidirectional MEMS
Frequency response at 94 dB SPL	100Hz to 5 kHz
Total harmonic distortion (THD)	0.25% (typical)

SPEAKERS

Number	20W x2
Type	4" aluminum cone
Acoustic output (hardware capable)	91 dB-SPL @ 1 m
Total harmonic distortion (THD)	<3%
Frequency response	50Hz to 16 kHz
Amplifier class	D

CONNECT MODULE

Interface to computer	Single USB 2.0, type B
Auxiliary out	3.5 mm single-ended stereo jack x1
Auxiliary in	3.5 mm single-ended stereo jack x1
Connection to microphone and speaker bar	RJ-45 x2

OPERATING

Room size	Up to 25' x 25' (7.6 x 7.6 m)
Operating systems	Windows® 7, Windows 8, Windows 10, Mac® OS X® 10.14 and 10.15 (Mojave and Catalina)
System setup	Plug and play

PART NUMBERS

HDL300-B, HDL300 audio conferencing system, black bar
 HDL300-W, HDL300 audio conferencing system, white bar

SYSTEM INCLUDES

Integrated microphone and speaker bar
 Connect module, white
 Connect module mounting bracket
 Country specific, power cable 6' (2.5 m), black
 Ethernet cable, CAT6 SFTP, 50' (15 m), Class 3 rated, black
 USB Type A-B cable, 10' (3 m), VW-1 rated, black
 Infrared remote
 AAA batteries x2
 Documentation kit

POWER

Power rating	Universal switching 100-240V AC, 50-60Hz
Power consumption	Standby <2.5W Operational <25W

ENVIRONMENTAL

System temperature	0° C to 40° C (32° F to 104° F) operating temperature, -20° C to 70° C (-4° F to 158° F) storage temperature, humidity 5–90% (noncondensing)
--------------------	--

WEIGHTS

Integrated microphone and speaker bar	18.0 lb. (8.2 kg)
Connect module	1.5 lb. (0.7 kg)
Shipping	28.0 lb. (12.7 kg)

DIMENSIONS

Integrated microphone and speaker bar	Width: 60.0" (152.4 cm) Height: 5.91" (14.9 cm) Depth: 3.5" (9.0 cm)
Connect module	Width: 6.5" (16.5 cm) Height: 1.41" (3.6 cm) Depth: 4.31" (10.9 cm)
Shipping	Width: 64.75" (164.4 cm) Height: 10.63" (27.0 cm) Depth: 9.5" (24.1 cm)

CERTIFICATIONS

Electromagnetic compatibility	FCC Part 15, Class A ICES-003, Class A, CISPR 32 (EN55032), Class A CISPR 24 (EN55024)
Safety	UL 60950, CAN/CSA-C22.2 NO. 60950, IEC/EN60950, AS/NZS 60950
Environmental	RoHS, WEEE, REACH

WARRANTY

Integrated microphone and speaker bar and connect module – Standard 2-year limited hardware (3 years with enrollment in Nureva Console)
 Accessories and cables – 30 days

For more information

Nureva Inc.
 Tel. 403.699.9781
sales@nureva.com
inquiries@nureva.com

